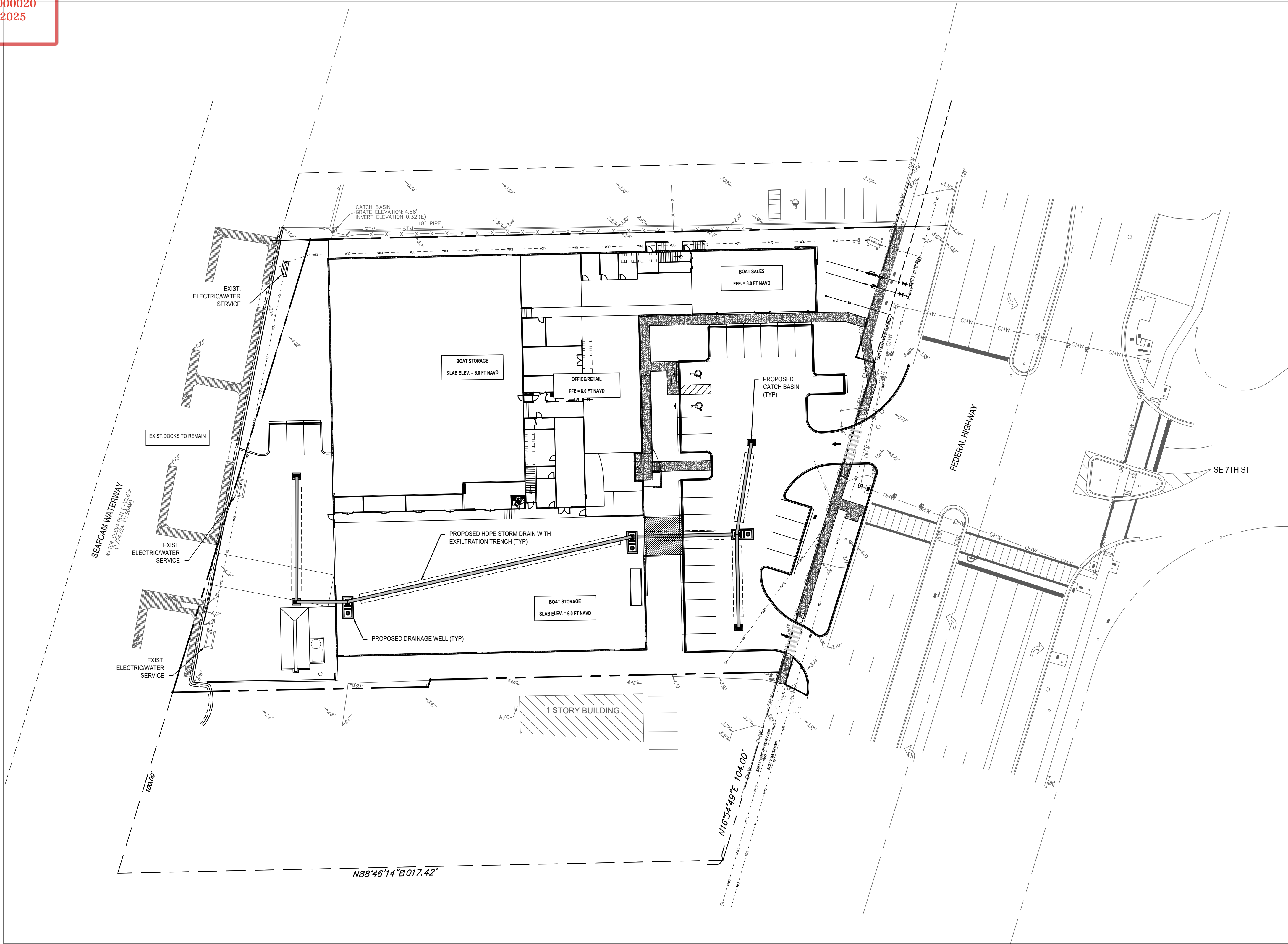


DRC

PZ24- 12000020
12/03/2025



PAVING AND GRADING LEGEND

PROPERTY OR R/W LINE	ABBREVIATIONS
CENTER LINE	PROP. PROPOSED
NON VEHICULAR ACCESS LINE	EXIST. EXISTING
	I.E. INVERT ELEVATION
	M.H. MANHOLE
	C.B. CATCH BASIN
	D.W. DRAINAGE WELL
	R.E. RSM ELEVATION
	G.E. GRATE ELEVATION

GENERAL PAVING AND GRADING NOTES:

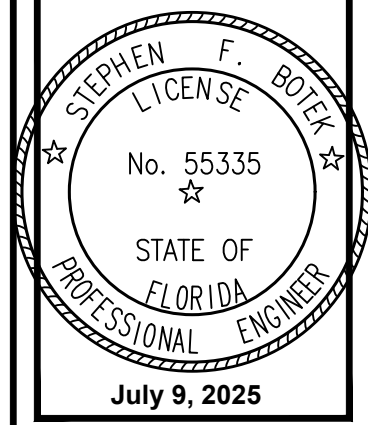
- CONTRACTOR TO RESTORE ALL EXISTING PAVEMENT, PAVEMENT MARKINGS, SIDEWALK, LANDSCAPING, IRRIGATION, ETC. DAMAGED DURING CONSTRUCTION INCLUDING ANY DAMAGE TO EXISTING ROADWAY IN PUBLIC R.O.W.
- EXISTING GRADES SHOWN BY ~~XXXX~~ ARE FOR REFERENCE ONLY. FINISHED GRADES INDICATED BY ~~XXXX~~ GOVERN.
- ALL ELEVATIONS SHOWN HEREON REFER TO NAVD 1988 UNLESS NOTED OTHERWISE.
- CROSSWALKS AND HC RAMPS TO CONFORM TO ADA W/ DETECTABLE WARNING SURFACE.
- EXACT LOCATION OF METERS AND BFPs TO BE COORDINATED IN THE FIELD.
- REFER TO PAVING, GRADING, AND DRAINAGE DETAILS AND SECTIONS FOR ADDITIONAL INFORMATION.
- RESTORE ANY PAVEMENT MARKINGS AFFECTED BY THE INSTALLATION OF THE TYPE 'F' CURB AND GUTTER PER BROWARD COUNTY MINIMUM STANDARDS.
- ALL ADA MATS / DETECTABLE WARNING ARE TO BE CAST-IN-PLACE.
- UNLESS NOTED OTHERWISE ON THE PLANS OR DETAILS, ANY MILLING AND RESURFACING REQUIRED BY THIS PROJECT SHALL BE A MINIMUM OF 1" DEPTH.

BTE REF DATE: 00.00.00

REVISIONS

DATE

#



THIS DOCUMENT HAS BEEN
DIGITALLY SIGNED AND
SEALED BY STEPHEN F. BOTEK,
P.E. ON THE DATE ADJACENT
TO THE SEAL.

PRINTED COPIES OF THIS
DOCUMENT ARE NOT
CONSIDERED SIGNED AND
SEALED AND THE SIGNATURE
MUST BE VERIFIED ON ANY
ELECTRONIC COPIES.

PRELIMINARY PAVING AND GRADING PLAN

POMPANO BEACH MARINE CENTER

701 N FEDERAL HWY

POMPANO BEACH, FL 33062

Botek Thurlow

Engineering, Inc.

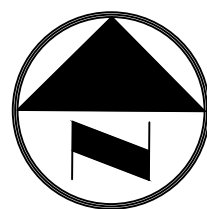
3400 NW 9th Avenue, Suite 102, Ft. Lauderdale, FL 33309
www.botekthurlow-eng.com P: 954-568-8888 F: 954-568-0757

BTE PROJECT #:
23-1102

PROJECT DATE:
07-09-25

SHEET #:

C-1



0 15 30 60 90

GRAPHIC SCALE IN FEET

Always call 811 two full business days before you dig to
have underground utilities located and marked.

Sunshine811.com